

3/2 DIRECT ACTING SOLENOID VALVE

TYPE	PRESSURE	UNI
30301	0 - 14 bar	
30310	0 - 32 bar	

TYPE	PRESSURE	NO
30201	0 - 20 bar	
30206	0 - 63 bar	

TYPE	PRESSURE	NC
30125	0 - 20 bar	
30126	0 - 63 bar	

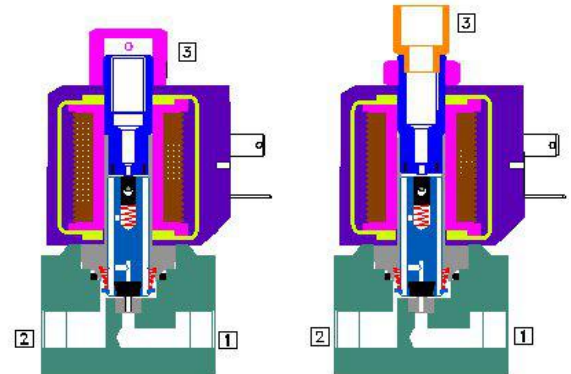
FEATURES

- Bubble tight shut off
- Mounts in any position
- Suitable for vacuum up to 10⁻⁶ torr
- Vibration resistance up to 9g
- Suitable for high speed cycling
- Speed up to 1000 cycles/ min
- Life >10 million cycles
- Manual override optionally provided



WETTED PARTS

Code	✕	B2	B5
Body	Anodized Aluminium	Brass	SS 316
Internals	Aluminium	Brass	SS 316
Guide Assembly	SS 304		
Shadow-Ring	Copper/ Silver/ None		
Plunger, Insert	SS 430		
Spring	SS 302		
Seat, Seals	NBR, Viton, EPDM		



AMBIENT AND FLUID TEMPERATURE

-30 °C to 75 °C

SPECIAL VERSION AND SUFFIX

Suffix : (Valve) OX, AM
Special version : (Coil) CO, FR, SS, LC, III, TM

MEDIA

Air, Inert Gases

APPLICATION

Single acting actuator/ Cylinder/ control valve actuation
Diverting/ mixing of fluid

PORT CONNECTION

FUNCTION	INLET	OUTLET	EXHAUST
NC	1	2	3
NO	3	2	1
Mixing	1 and 3	2	
Diverting	2	1 and 3	

Contact Rotex for

- Any other ambient, fluid temperature, media and application
- UL listed, Listed general purpose Valve
- Media like Water, Light Oil etc.



SPARES

(Refer page 25 for ordering code)

SPARE KIT	CODE
Seal Kit : Oring Set and Plunger Assembly	98
Repair Kit : Oring Set, Plunger Assembly, Springs, Manual Override, Guide Assembly	99
Solenoid Kit : Solenoid, Gasket and Nut	34

APPROVAL

(* applied for)

Approval	TYPE 4X, 6P	IP67	Ex d IIC T4 or T5 or T6 IP66	Ex ia IIC T6 IP67	DGMS	CCOE
		✓	✓	✓	✓	✓
		✓	✓	✓		
	✓		*			
			✓	✓		
			✓	✓		
			✓	✓		



SPECIFICATION

PORT CONNECTION			PRE-SSURE bar		ORIFICE (mm) FLOW FACTOR kv (LPM OF WATER @ 1 bar ΔP)	VALVE TYPE	PILOT PRESSURE	BODY MATERIAL AND INTERNALS					SEALS				MANUAL OVERRIDE			SOLENOID ENCLOSURE				SUFFIX		POWER VA		CONSTRUCTION REFERENCE NUMBER
SIZE	BSP(F)	NPT(F)	MINIMUM	MAXIMUM				ALUMINIUM	ALUMINIUM + SS	BRASS (STD. PORT NPT)	SS-316 (STD. PORT NPT)	NBR	Viton	EPDM	HYTREL	PTFE	NIL	STAYPUT CUM MOMENTARY	MOMENTARY	FLYING LEAD	PLUG IN, IP67	SQ. PLUG IN, IP67	TERMINAL BOX IP67	EXPLOSION PROOF IIC, IP67	LARGE ENCLOSURE	SOLENOID SIZE	OXYGEN	

3/2 NORMALLY CLOSED

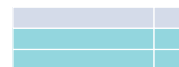
1/8", 1/4", 3/8", 1/2" 1G, 2G, 3G, 4G 1R, 2R, 3R, 4R	0	4	3	4	30125	×	B2	B5	×	S2	S1	S8	×	M6	M8	22	25	T	E	III	14	✓	✓	18	12	8	A
	0	6	2.5	3.5	30125	×	B2	B5	×	S2	S1	S8	×	M6	M8	22	25	T	E	III	14	✓	✓	18	12	8	A
	0	6	4	7	30126	×	B2	B5	×	S2	S1	S8	×	M6	M8		25	T	E		18	✓	✓	13	13	13	C
	0	8	2.2	2.5	30125	×	B2	B5	×	S2	S1	S8	×	M6	M8	22	25	T	E	III	14	✓	✓	18	12	8	A
	0	8	3.5	5	30126	×	B2	B5	×	S2	S1	S8	×	M6	M8		25	T	E		18	✓	✓	13	13	13	C
	0	12	3	4	30126	×	B2	B5	×	S2	S1		×	M6	M8		25	T	E		18	✓	✓	13	13	13	C
	0	15	1.6	1.8	30125	×	B2	B5	×	S2	S1	S8	×	M6	M8	22	25	T	E	III	14	✓	✓	18	12	8	A
	0	16	2.5	3.5	30126	×	B2	B5	×	S2	S1		×	M6	M8		25	T	E		18	✓	✓	13	13	13	C
	0	20	1.2	0.7	30125	×	B2	B5	×	S2	S1	S8	×	M6	M8	22	25	T	E	III	14	✓	✓	18	12	8	A
	0	25	2.2	2.5	30126	×	B2	B5	×	S2	S1	S8	×	M6	M8		25	T	E		18	✓	✓	13	13	13	C
	0	32	1.8	1.8	30126	×	B2	B5	×	S2	S1	S8	×	M12	M5		25	T	E		18	✓	✓	13	13	13	C
	0	63	1.2	0.7	30126	×	B2	B5					×	M11	M4		25	T	E		18	✓	✓	13	13	13	C
	0	10	1.8	1.8	30125	×	B2	B5	×	S2	S1		×	M6	M8	22	25	T	E	III	14	✓	✓	18	12	8	B

7

Cable Entry	T	E				
		Ex d	Ex ia	Ex emb		
M20 x 1.5	19	39	87MS	66MS	58MS	58LTMS
M25 x 1.5			87	66	58	58LT
1/2" NPT	16	37	87NS	66NS	58NS	58LTNS

× = Do not specify when opted for. Refer Page # 22 for Value of ×
✓ = Options available

Code	Construction Reference
A	301, 303
B	302, 304
C	305, 307
D	306, 308



3/2 DIRECT ACTING SOLENOID VALVE

SPECIFICATION

PORT CONNECTION			PRE-SURE bar		VALVE TYPE	PILOT PRESSURE	BODY MATERIAL AND INTERNALS						SEALS					MANUAL OVERRIDE		SOLENOID ENCLOSURE					SUFFIX		POWER VA		CONSTRUCTION REFERENCE NUMBER				
SIZE	BSP(F)	NPT(F)	MINIMUM	MAXIMUM			ORIFICE (mm)	FLOW FACTOR kv (LPM OF WATER @ 1 bar ΔP)	ALUMINIUM	ALUMINIUM + SS	BRASS (STD. PORT NPT)	SS 316 (CFR)	SS 316 (CFR) (STD. PORT NPT)	NBR	Viton	EPDM	HYREL	PTFE	NIL	STAYPUT CUM MOMENTARY	MOMENTARY	WEATHER PROOF			EXPLOSION PROOF		SOLENOID SIZE	OXYGEN		AMONIA	AC INRUSH	AC HOLDING	DC
																						FLYING LEAD	PLUG IN, IP67	SQ. PLUG IN, IP67	TERMINAL BOX IP67	EXPLOSION PROOF IIC, IP67							

3/2 NORMALLY CLOSED

1/8", 1/4", 3/8", 1/2" 1G, 2G, 3G, 4G 1R, 2R, 3R, 4R	0	4	3	4	30125	*	B2	B5	*	S2	S1	S8	*	M6	M8	22	25	T	E	III	14	✓	✓	18	12	8	A	
	0	6	2.5	3.5	30125	*	B2	B5	*	S2	S1	S8	*	M6	M8	22	25	T	E	III	14	✓	✓	18	12	8	A	
	0	6	4	7	30126	*	B2	B5	*	S2	S1	S8	*	M6	M8	25	T	E				18	✓	✓	13	13	13	C
	0	8	2.2	2.5	30125	*	B2	B5	*	S2	S1	S8	*	M6	M8	22	25	T	E	III	14	✓	✓	18	12	8	A	
	0	8	3.5	5	30126	*	B2	B5	*	S2	S1	S8	*	M6	M8	25	T	E				18	✓	✓	13	13	13	C
	0	12	3	4	30126	*	B2	B5	*	S2	S1	S8	*	M6	M8	25	T	E				18	✓	✓	13	13	13	C
	0	15	1.6	4	30125	*	B2	B5	*	S2	S1	S8	*	M6	M8	22	25	T	E	III	14	✓	✓	18	12	8	A	
	0	16	2.5	3.5	30126	*	B2	B5	*	S2	S1	S8	*	M6	M8	25	T	E				18	✓	✓	13	13	13	C
	0	20	1.2	0.7	30125	*	B2	B5	*	S2	S1	S8	*	M6	M8	22	25	T	E	III	14	✓	✓	18	12	8	A	
	0	25	2.2	2.5	30126	*	B2	B5	*	S2	S1	S8	*	M6	M8	25	T	E				18	✓	✓	13	13	13	C
	0	32	1.8	1.8	30126	*	B2	B5	*	S2	S1	S8	*	M12	M5	25	T	E				18	✓	✓	13	13	13	C
	0	63	1.2	0.7	30126	*	B2	B5	*	S2	S1	S8	*	M11	M4	25	T	E				18	✓	✓	13	13	13	C
0	10	1.8	1.8	30125	*	B2	B5	*	S2	S1	S8	*	M6	M8	22	25	T	E	III	14	✓	✓	18	12	8	B		

7

Cable Entry	T	E		
		Öc/A	Öc/A	Öc/A
M20 x 1.5	FJ	ii	ii	ii
M25 x 1.5		ii	ii	ii
1/2" NPT	Fj	ii	ii	ii

* = Do not specify when opted for. Refer Page # 22 for Value of *
✓ = Options available

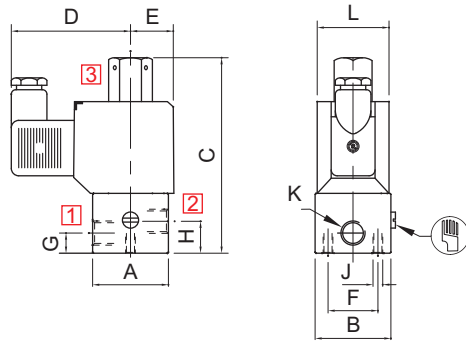
Code	Construction Reference
A	301, 303
B	302, 304
C	305, 307
D	306, 308



3/2 DIRECT ACTING SOLENOID VALVE

DIMENSIONS

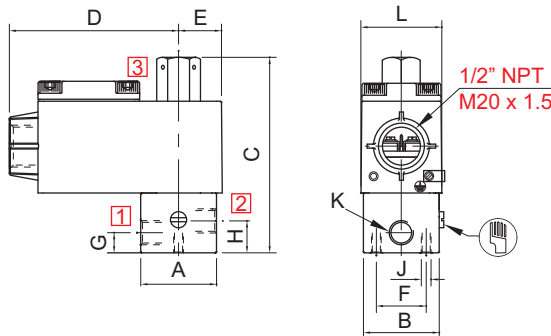
All Dimensions are in mm



MANUAL OVERRIDE OPTIONALLY PROVIDED

PLUG IN SOLENOID TYPE 22

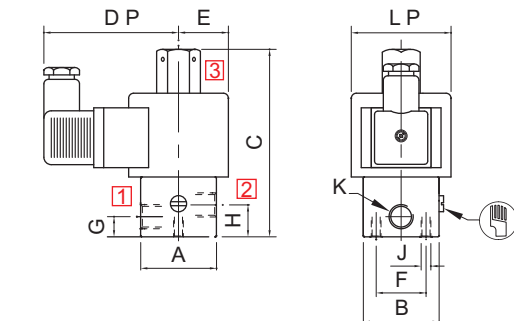
K (PORT SIZE)	A	B	C	D	E	F	G	H	J	L	BODY MATL.	CONST. REF.
VALVE TYPE : 30125												
1/8", 1/4"	38	38	98	60	25	25	10	16	M6	36	AL, BR	301
3/8", 1/2"	60	38	106	60	25	25	20.5	20.5	M6	36	AL, BR	302
1/8", 1/4"	44	Ø48	102	60	25	25	17	10.5	M6	36	SS	303
3/8", 1/2"	58	Ø62	111	60	25	25	14	14	M6	36	SS	304



MANUAL OVERRIDE OPTIONALLY PROVIDED

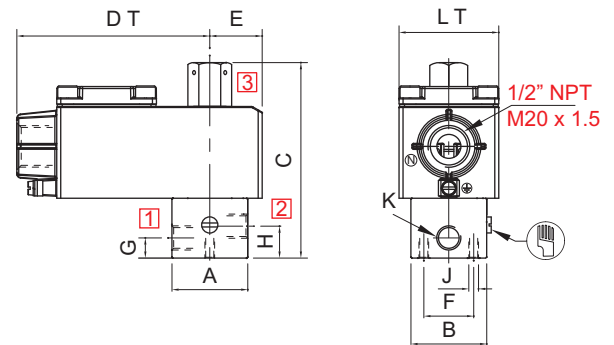
TERMINAL BOX/ Ex d ENCLOSURE, TYPE 16, 19, 37, 39, 58, 58LT

K (PORT SIZE)	A	B	C	D	E	F	G	H	J	L	BODY MATL.	CONST. REF.
VALVE TYPE : 30125												
1/8", 1/4"	38	38	98	85	25	25	10	16	M6	41	AL, BR	301
3/8", 1/2"	60	38	106	85	25	25	20.5	20.5	M6	41	AL, BR	302
1/8", 1/4"	44	Ø48	102	85	25	25	17	10.5	M6	41	SS	303
3/8", 1/2"	58	Ø62	111	85	25	25	14	14	M6	41	SS	304



MANUAL OVERRIDE OPTIONALLY PROVIDED

SQUARE PLUG IN SOLENOID TYPE 25



MANUAL OVERRIDE OPTIONALLY PROVIDED

TERMINAL BOX/ Ex d LARGE ENCLOSURE, TYPE 16, 19, 37, 39, 58, 58LT, LC

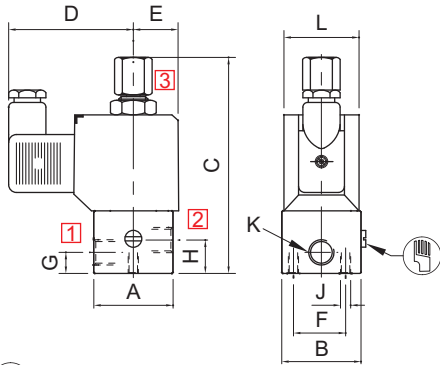
K (PORT SIZE)	A	B	C	DP	DT	E	F	G	H	J	LP	LT	BODY MATL.	CONST. REF.
VALVE TYPE : 30125														
1/8", 1/4"	38	38	98	66	97	25	25	10	16	M6	Ø50	50	AL, BR	301
3/8", 1/2"	60	38	106	66	97	25	25	20.5	20.5	M6	Ø50	50	AL, BR	302
1/8", 1/4"	44	Ø48	102	66	97	25	25	17	10.5	M6	Ø50	50	SS	303
3/8", 1/2"	58	Ø62	111	66	97	25	25	14	14	M6	Ø50	50	SS	304
VALVE TYPE : 30126														
1/8", 1/4"	50	50	110	68	103	25	25	10.5	17	M6	Ø50	50	AL, BR	305
3/8", 1/2"	65	50	110	68	103	32	25	14	14	M6	Ø50	50	AL, BR	306
1/8", 1/4"	44	Ø48	102	68	103	25	25	10.5	17	M6	Ø50	50	SS	307
3/8", 1/2"	58	Ø62	102	68	103	32	25	14	14	M6	Ø50	50	SS	308



3/2 DIRECT ACTING SOLENOID VALVE

DIMENSIONS

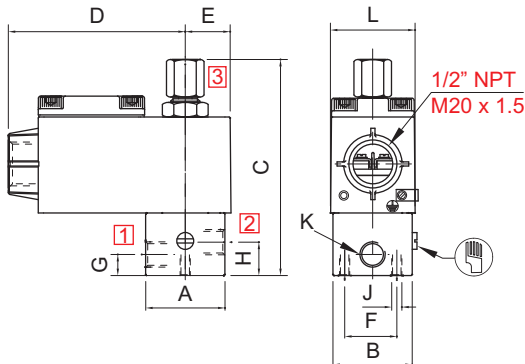
All Dimensions are in mm



PLUG IN SOLENOID TYPE 22

K (PORT SIZE)	A	B	C	D	E	F	G	H	J	L	BODY MATL.	CONST. REF.
VALVE TYPE : 30201, 30301												
1/8", 1/4"	38	38	98	60	22	25	10	16	M6	36	AL, BR	309
3/8", 1/2"	60	38	106	60	22	25	20.5	20.5	M6	36	AL, BR	310
1/8", 1/4"	44	Ø48	102	60	22	25	17	10.5	M6	36	SS	311
3/8", 1/2"	58	Ø62	111	60	22	25	14	14	M6	36	SS	312

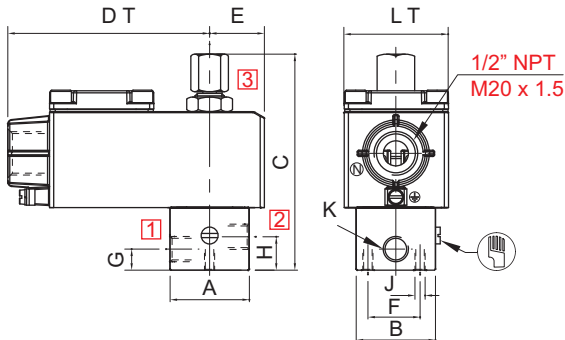
MANUAL OVERRIDE OPTIONALLY PROVIDED



TERMINAL BOX/ Ex d ENCLOSURE, TYPE 16, 19, 37, 39, 58, 58LT

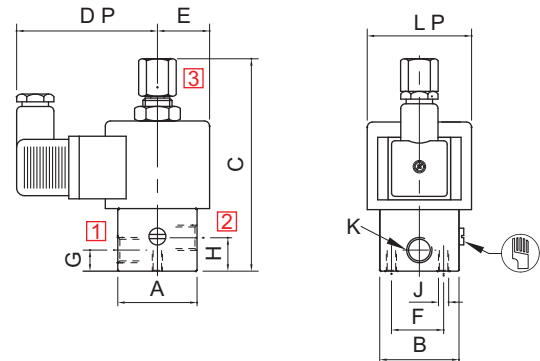
K (PORT SIZE)	A	B	C	D	E	F	G	H	J	L	BODY MATL.	CONST. REF.
VALVE TYPE : 30201, 30301												
1/8", 1/4"	38	38	102	85	22	25	10	16	M6	41	AL, BR	309
3/8", 1/2"	60	38	106	85	22	25	20.5	20.5	M6	41	AL, BR	310
1/8", 1/4"	44	Ø48	102	85	22	25	17	10.5	M6	41	SS	311
3/8", 1/2"	58	Ø62	111	85	22	25	14	14	M6	41	SS	312

MANUAL OVERRIDE OPTIONALLY PROVIDED



MANUAL OVERRIDE OPTIONALLY PROVIDED

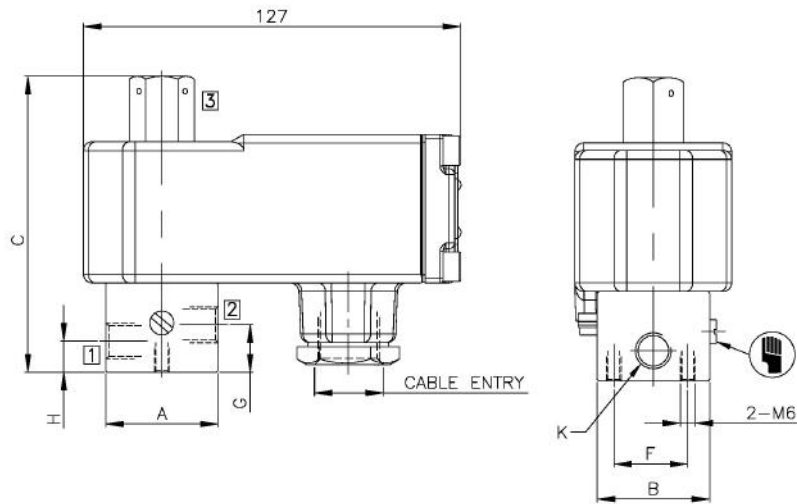
TERMINAL BOX/ Ex d LARGE ENCLOSURE, TYPE 16, 19, 37, 39, 58, 58LT, LC



MANUAL OVERRIDE OPTIONALLY PROVIDED
SQUARE PLUG IN SOLENOID TYPE 25

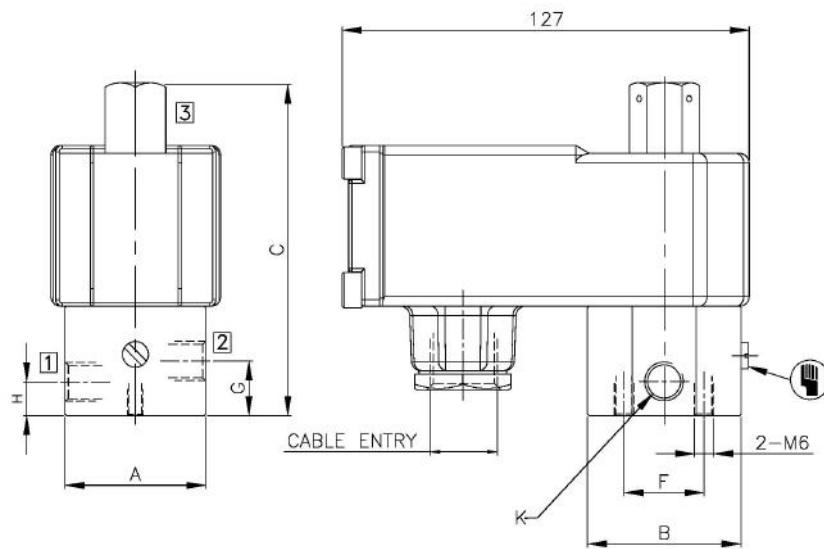
K (PORT SIZE)	A	B	C	DT	DP	E	F	G	H	J	LP	LT	BODY MATL.	CONST. REF.
VALVE TYPE : 30201, 30301														
1/8", 1/4"	38	38	98	97	66	26	25	10	16	M6	Ø50	50	AL, BR	309
3/8", 1/2"	60	38	106	97	66	26	25	20.5	20.5	M6	Ø50	50	AL, BR	310
1/8", 1/4"	44	Ø48	102	97	66	26	25	17	10.5	M6	Ø50	50	SS	311
3/8", 1/2"	58	Ø62	111	97	66	26	25	14	14	M6	Ø50	50	SS	312
VALVE TYPE : 30206, 30310														
1/8", 1/4"	50	50	124	103	68	28	25	10	17	M6	Ø50	50	AL, BR	313
3/8", 1/2"	65	50	124	103	68	28	25	14	14	M6	Ø50	50	AL, BR	314
1/8", 1/4"	50	50	124	103	68	28	25	10	17	M6	Ø50	50	SS	315
3/8", 1/2"	65	50	124	103	68	28	25	14	14	M6	Ø50	50	SS	316

7



BCE SOLENOID/ Ex d TYPE 87

K (PORT SIZE)	A	B	C	F	G	H	BODY MATL.	CONST. REF.
VALVE TYPE : 30125								
1/8", 1/4"	38	38	100	25	16	10.5	AL, BR	301
3/8", 1/2"	60	38	108	25	20.5	20.5	AL, BR	302
1/8", 1/4"	44	Ø48	105	25	17	10.5	SS	303
3/8", 1/2"	58	Ø62	108	25	14	14	SS	304



BCE SOLENOID/ Ex d TYPE 87

