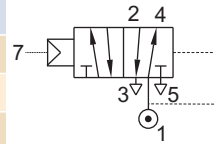


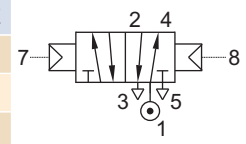
5/2 AIR OPERATED, SPRING/ AIR RETURN, SUBBASE MOUNTED VALVE

TYPE	PRESSURE

TYPE	PRESSURE
53445	0 - 16 bar



TYPE	PRESSURE
58445	0 - 16 bar



FEATURES

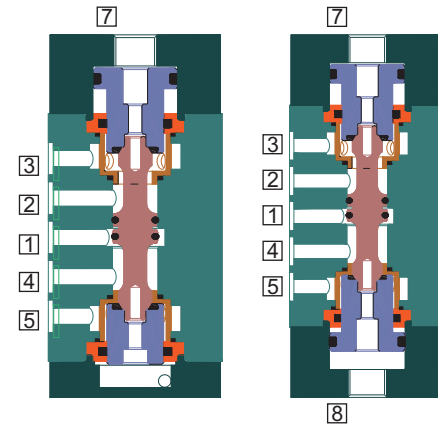
- Highly reliable rugged construction
- Positive Sealing and snap operation with poppet design
- Bubble tight shut off
- Vibration resistance up to 9g
- Suitable for high speed cycling
- Orifice up to 25mm, higher orifice available on request
- Life >10 million cycles
- Speed up to 1000 cycles/ min
- Larger exhaust for quick operation of the cylinder/ actuator
- Mounts in any position
- O Rings and fasteners supplied loose with the Valve



WETTED PARTS

Code	※	B1	B5
Body	Anodized Aluminium	Anodized Aluminium	SS 316
Internals	Aluminium, Brass and SS 316	SS 316	SS 316
Spring/ Circlip	SS 302		
Fasteners	SS 304		
Seat, Seals	NBR, Viton, F. Silicon		

※ Do not specify code if opted for. Refer Page # 22 for Value of ※



AMBIENT AND FLUID TEMPERATURE

-30 °C to 75 °C

SPECIAL VERSION AND SUFFIX

Suffix : (Valve) AM

MEDIA

Air, Inert Gases, Oil, Water

PORT CONNECTION

INLET	OUTLET	OUTLET	EXHAUST	EXHAUST	EXTERNAL PILOT INLET	VALVE TYPE
1	2	4	3	5	7	53445
1	2	4	3	5	7 and 8	58445

Contact Rotex for

- Any other ambient, fluid temperature, media and application
- UL listed, Listed general purpose Valve

SPARES

(Refer page 25 for ordering code)

SPARE KIT	CODE
Seal Kit : Oring Set	98
Repair Kit : Oring Set, Fastener, Springs	99



The air pressure should be minimum 2 bar or ≥ main fluid pressure whichever is higher. Select Manifold MF008



5/2 AIR OPERATED, SPRING/ AIR RETURN, SUBBASE MOUNTED VALVE

9

SPECIFICATION

PORT CONNECTION	PRE-SSURE bar	ORIFICE (mm)	FLOW FACTOR kv (LPM OF WATER @ 1 bar ΔP)	VALVE TYPE	PILOT PRESSURE	BODY MATERIAL AND INTERNALS				SEALS				MANUAL OVERRIDE	SOLENOID ENCLOSURE				SUFFIX	POWER VA		CONSTRUCTION REFERENCE NUMBER
						ALUMINIUM	ALUMINIUM + SS	BRASS	SS 316/ CF8	NBR	Viton	EPDM	HYTREL		F. Silicon	WEATHER PROOF	EXPLOSION PROOF	OXYGEN		AMONIA	AC INRUSH	

5/2 AIR OPERATED SPRING RETURN

SB		0 16 6 14	53445A	2-16	*		B5	*	S2									✓			738
		0 16 12 50	53445	2-16	*		B5	*	S2									✓			739
		0 16 25 100	53445	2-16	*		B5	*	S2									✓			740

5/2 AIR OPERATED AIR RETURN

SB		0 16 6 14	58445A	2-16	*		B5	*	S2									✓			741
		0 16 12 50	58445	2-16	*		B5	*	S2									✓			742
		0 16 25 100	58445	2-16	*		B5	*	S2									✓			743

× = Do not specify when opted for. Refer Page # 22 for Value of ×
 ✓ = Options available

* Valve type printed in red colour is external pilot air/ air operated valve

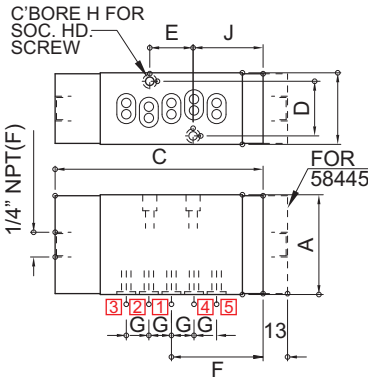
ORDERING CODE AND EXAMPLE VALVE

TYPE - SUFFIX - ORIFICE - PORT CONNECTION - BODY AND INTERNALS - SEAL

e.g. 58445-6-SB

DIMENSIONS

All Dimensions are in mm



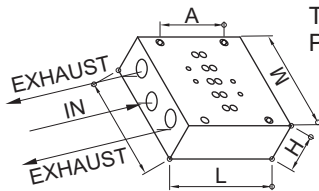
K (PORT SIZE)	A	B	C	D	E	F	G	H	J	CONST. REF.	C	CONST. REF.
VALVE TYPE : 53445										58445		
SUBBASE	53	38	111	29	49	49	12	M4	37	738	124	741
SUBBASE	75	45	144	36	66	66	18	M5	54.5	739	157	742
SUBBASE	110	65	193	80	92	92	28	M8	80.5	740	206	743

ADOPTER PLATE

Adopter plate is used for mounting 1 No. 53445/ 58445 valve.

This has individual inlet and outlets.

Pilot connection can be provided on the adopter plate



ADOPTER PLATE MODEL	K (PORT SIZE)	L	W	H	A
AP5A	1/4"	122	500	32	95
AP5B	3/8"	122	60	36	95
AP5C	1/2"	165	80	40	145
AP5D	3/4"	165	100	45	145
AP5E	1"	165	100	50	145

