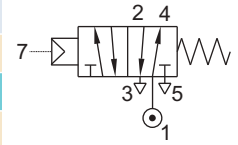


## 5/2 AIR OPERATED, SPRING/ RETURN VALVE

TYPE	PRESSURE

TYPE	PRESSURE

TYPE	PRESSURE
53400	0 - 20 bar



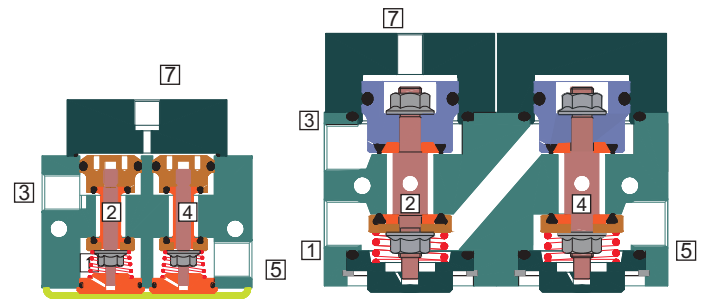
### FEATURES

- Bubble tight shut off
- Mounts in any position
- Vibration resistance up to 9g
- Suitable for high speed cycling
- Speed up to 1000 cycles/ min. for Valve type 53400, 600 cycles/ min for valve type 53402
- Life >10 million cycles



### WETTED PARTS

Code	※	B1	B2	B5
Body	Anodized Aluminium	Anodized Aluminium	Brass	SS 316
Internals	Aluminium, Brass and SS 316	SS 316	Brass and SS 316	SS 316
Spring/ Circlip	SS 302			
Fasteners	SS 304			
Seat, Seals	NBR, Viton, F.Silicon			



### AMBIENT AND FLUID TEMPERATURE

-30 °C to 75 °C

### SPECIAL VERSION AND SUFFIX

Suffix : (Valve) OX, AM,

### MEDIA

Air, Inert gases, Oil, Water

### SPARES

(Refer page 25 for ordering code)

SPARE KIT	CODE
Seal Kit : Oring Set	98
Repair Kit : Oring Set, Fastener, Springs	99

### APPLICATION

Operation of double acting cylinder/ actuator

### PORT CONNECTION

INLET	OUTLET	OUTLET	EXHAUST	EXHAUST	PILOT INLET
1	2	4	3	5	7

Contact Rotex for

- Any other ambient, fluid temperature, media and application



The pilot pressure should be minimum 2 bar or  $\geq$  main fluid pressure whichever is higher.



# 5/2 AIR OPERATED, SPRING/ RETURN VALVE

## SPECIFICATION

SIZE	PORT CONNECTION		PRE-SSURE bar			ORIFICE (mm)	FLOW FACTOR kv (LPM OF WATER @ 1 bar ΔP)	VALVE TYPE	PILOT PRESSURE	BODY MATERIAL AND INTERNALS					SEALS				MANUAL OVERRIDE		SOLENOID ENCLOSURE		SUFFIX	POWER VA		CONSTRUCTION REFERENCE NUMBER						
	BSP(F)	NPT(F)	MINIMUM	MAXIMUM	ORIFICE (mm)					ALUMINIUM	ALUMINIUM + SS	BRASS (STD. PORT NPT)	SS 316 (CF8) (STD. PORT NPT)	NBR	Viton	EPDM	HYTREL	F.Silicon	NIL	STAYPUT CUM MOMENTARY	MOMENTARY	FLYING LEAD		PLUG IN, IP67	SQ. PLUG IN, IP67		TERMINAL BOX IP67	FPJUB Ex d IIC, T4 OR T6, IP67	LARGE ENCLOSURE	SOLENOID SIZE	OXYGEN	AMONIA
<b>5/2 AIR OPERATED</b>																																
1/4"	2G	2R	0	20	6	12	53400	2-20	×	B1	B2	B5	×	S2																		540
3/8"	3G	3R		20	6	12	53400	2-20	×	B1	B2	B5	×	S2																		545
1/2"	4G	4R	0	20	6	12	53400	2-20	×		B2	B5	×	S2																		545

× = Do not specify when opted for. Refer Page # 22 for Value of ×  
 ✓ = Options available

\* Valve type printed in red colour is external pilot air/ air operated valve

## ORDERING CODE AND EXAMPLE VALVE

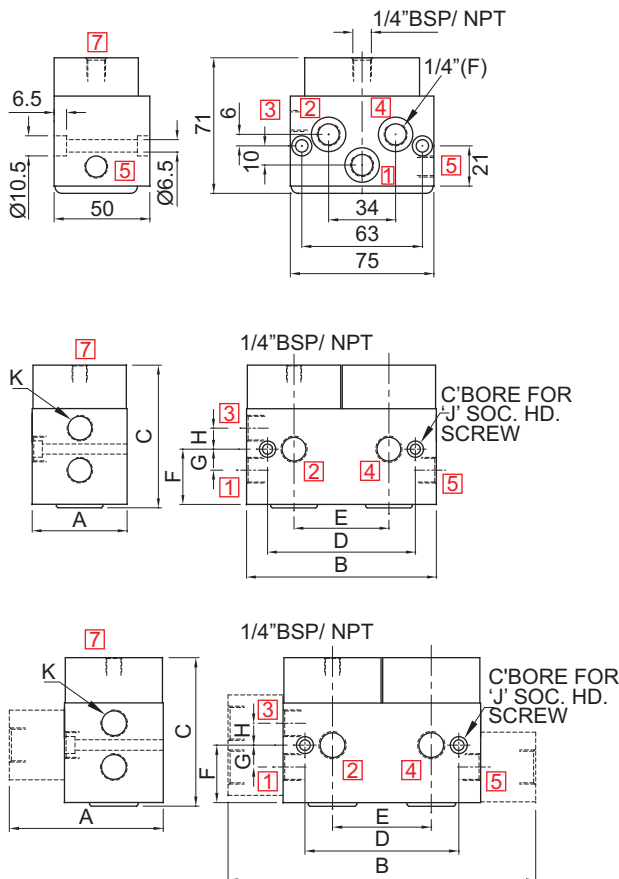
TYPE - SUFFIX - ORIFICE - PORT CONNECTION - BODY AND INTERNALS - SEAL

e.g. 53400-6-2R-B2

## DIMENSIONS

All Dimensions are in mm

### CONSTRUCTION REFERENCE : 540



### CONSTRUCTION REFERENCE : 545

