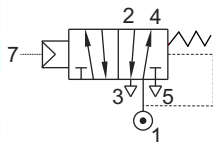
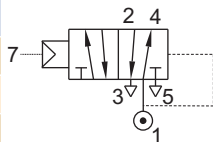


5/2 AIR OPERATED, SPRING/ AIR RETURN VALVE

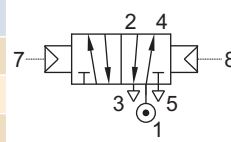
TYPE	PRESSURE
53440S	0 - 16 bar



TYPE	PRESSURE
53440	0 - 16 bar



TYPE	PRESSURE
58440	0 - 16 bar



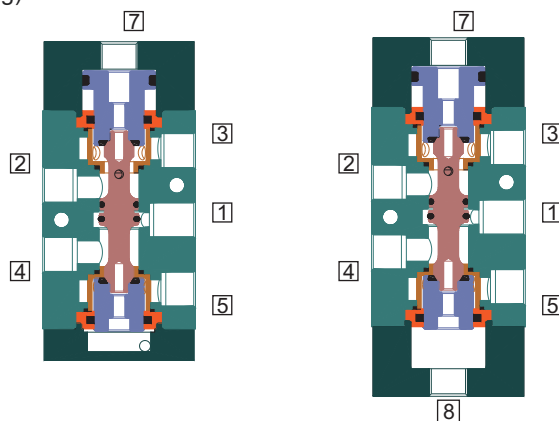
FEATURES

- Highly reliable rugged construction
- Positive Sealing snap operation with poppet design
- Bubble tight shut off
- Vibration resistance up to 9g
- Suitable for high speed cycling
- Speed up to 1200 cycles/ min
- Life >10 million cycles
- Larger exhaust for quick operation of the cylinder/ actuator
- Mounts in any position
- 53440 & 58440 Valve is Air failure to retain
- 53440S Valve is Air failure to retain (Air & Spring assisted for returning)



WETTED PARTS

Code	※	B1	B2	B5
Body	Anodized Aluminium	Anodized Aluminium	Brass	SS 316
Internals	Aluminium, Brass	SS 316	Brass	SS 316
Spring	SS 302			
Fasteners	SS 304			
Seat, Seals	NBR, Viton, F.Silicon			



AMBIENT AND FLUID TEMPERATURE

-30 °C to 75 °C

SPECIAL VERSION AND SUFFIX

Suffix : (Valve) OX, AM,

MEDIA

Air, Inert Gases, Oil, Water

APPLICATION

Double Acting actuator/ cylinder operation

PORT CONNECTION

INLET	OUTLET	OUTLET	EXHAUST	EXHAUST	EXTERNAL PILOT INLET	VALVE TYPE
1	2	4	3	5	7	53440
1	2	4	3	5	7 and 8	58440

Contact Rotex for

- Any other ambient, fluid temperature, media and application



The pilot pressure should be minimum 2 bar or \geq main fluid pressure whichever is higher.

Specifications are subject to change without notice.

169



5/2 AIR OPERATED, SPRING/ AIR RETURN VALVE

SPECIFICATION

PORT CONNECTION			PRE-SURE bar	ORIFICE (mm)	FLOW FACTOR kv (LPM OF WATER @ 1 bar ΔP)	VALVE TYPE	PILOTG PRESSURE	BODY MATERIAL AND INTERNALS					SEALS			MANUAL OVERRIDE	SOLENOID ENCLOSURE				SUFFIX		POWER VA		CONSTRUCTION REFERENCE NUMBER			
SIZE	BSP(F)	NPT(F)	MINIMUM					MAXIMUM	ALUMINIUM	ALUMINIUM + SS	BRASS (STD. PORT NPT)	SS 316/CF8 (STD. PORT NPT)	NBR	Viton	EPDM		HYTREL	F. Silicon	NIL	STAYPUT CUM MOMENTARY	MOMENTARY	FLYING LEAD	PLUG IN, IP67	SQ. PLUG IN, IP67		TERMINAL BOX IP67	FPJB Ex d IIC, T4 OR T6, IP67	LARGE ENCLOSURE

MONO STABLE

1/4"	2G	2R	0	16	6	12	53440A	2-16	*	B2	B5	*	S2																		546
1/4"	2G	2R	0	16	12	50	53440	2-16	*	B2	B5	*	S2																		547
1/2"	4G	4R	0	16	12	50	53440	2-16	*	B2	B5	*	S2																		547
1/2"	4G	4R	0	16	25	100	53440V01	2-16	*		B5	*	S2																		548
1/2"	4G	4R	0	16	25	100	53440V01	2-16			B17	*	S2																		548A
1"	8G	8R	0	16	25	185	53440V01	2-16	*		B5	*	S2																		548
1"	8G	8R	0	16	25	185	53440V01	2-16			B17	*	S2																		548A
1 1/2"	12G	12R	0	16	40	410	53440V01	2-16			B12	*	S2																		548B

BI STABLE

1/4"	2G	2R	0	16	6	12	58440A	2-16	*	B2	B5	*	S2																		549	
1/4"	2G	2R	0	16	12	50	58440	2-16	*	B2	B5	*	S2																			550
1/2"	4G	4R	0	16	12	50	58440	2-16	*	B2	B5	*	S2																			550
1/2"	4G	4R	0	16	25	100	58440V01	2-16	*		B5	*	S2																			551
1/2"	4G	4R	0	16	25	100	58440V01	2-16			B17	*	S2																			551A
1"	8G	8R	0	16	25	185	58440V01	2-16	*		B5	*	S2																			551
1"	8G	8R	0	16	25	185	58440V01	2-16			B17	*	S2																			551A
1 1/2"	12G	12R	0	16	40	410	58440V01	2-16			B12	*	S2																			551B

* = Do not specify when opted for. Refer Page # 22 for Value of *
 ✓ = Options available

* Valve type printed in red colour is external pilot air/ air operated valve

ORDERING CODE AND EXAMPLE VALVE

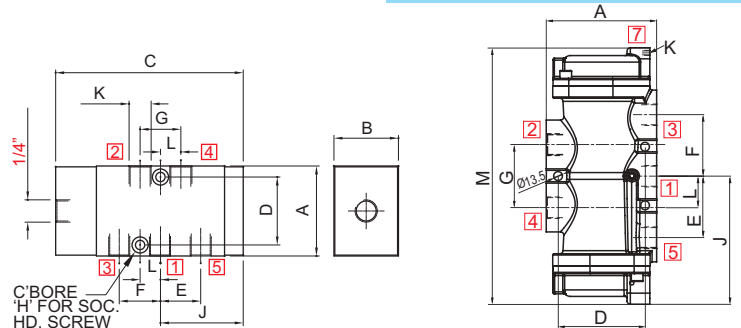
TYPE - SUFFIX - ORIFICE - PORT CONNECTION - BODY AND INTERNALS - SEAL
 e.g. 53440- 25-8G-B2-S2

DIMENSIONS

All Dimensions are in mm

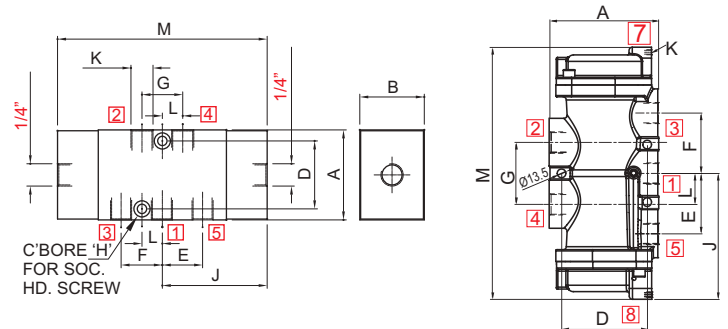
CONSTRUCTION REFERENCE: 548A, 548B

K (PORT SIZE)	A	B	C	D	E	F	G	H	J	L	CONST. REF.
VALVE TYPE : 53440, 53440V01											
1/4"	53	38	111	40	24	24	24	M6	62	12	546
1/2", 3/8"	75	45	144	50	36	36	36	M6	78	18	547
1", 3/4"	110	65	193	80	56	56	54	M8	101	27	548
1", 3/4"	110	95	230	100	80	80	54	M8	78	27	548A
1 1/2"	170	180	394	134	92	92	92	M8	197	48	548B



CONSTRUCTION REFERENCE: 551A, 551B

K (PORT SIZE)	A	B	D	E	F	G	H	J	L	M	CONST. REF.
VALVE TYPE : 58440, 58440V01											
1/4"	53	38	40	24	24	24	M6	49	12	124	549
1/2", 3/8"	75	45	50	36	36	36	M6	66	18	156	550
1", 3/4"	110	65	80	56	56	54	M8	92	27	202	551
1", 3/4"	110	95	100	80	80	54	M8	78	27	230	551A
1 1/2"	170	180	134	92	92	92	M8	197	48	394	551B



Specifications are subject to change without notice.

